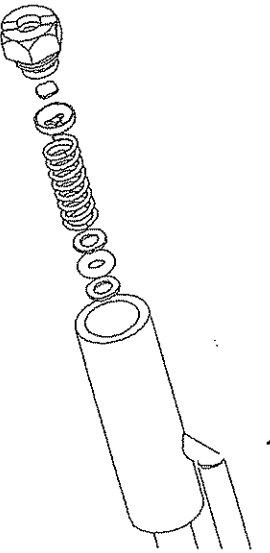


■ 1602011C PUMP PARTS KIT (MODEL 982)

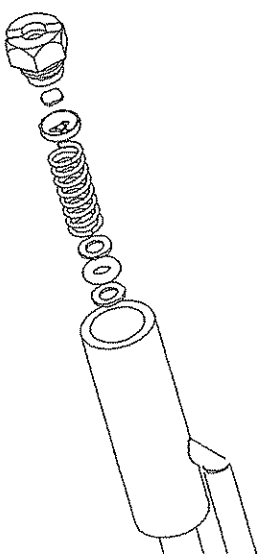


To replace pump parts, unscrew check valve on end of pump and remove spring; O-ring and two washers. Replace parts in sequence shown above.

PART #180382

2001-10-03 rev. 5

■ 1602011C PUMP PARTS KIT (MODEL 982)

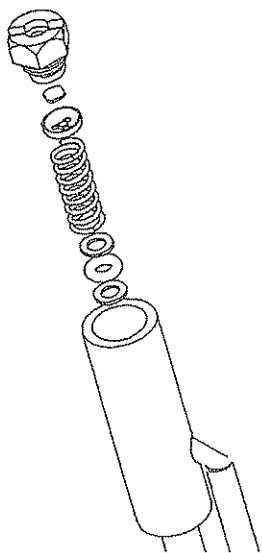


To replace pump parts, unscrew check valve on end of pump and remove spring; O-ring and two washers. Replace parts in sequence shown above.

PART #180382

2001-10-03 rev. 5

■ 1602011C PUMP PARTS KIT (MODEL 982)

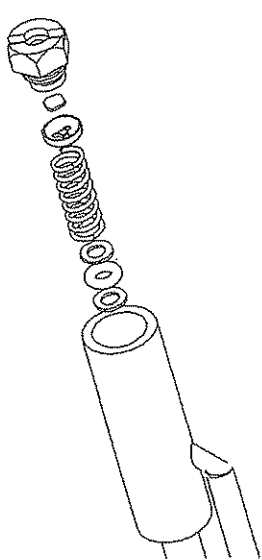


To replace pump parts, unscrew check valve on end of pump and remove spring; O-ring and two washers. Replace parts in sequence shown above.

PART #180382

2001-10-03 rev. 5

■ 1602011C PUMP PARTS KIT (MODEL 982)

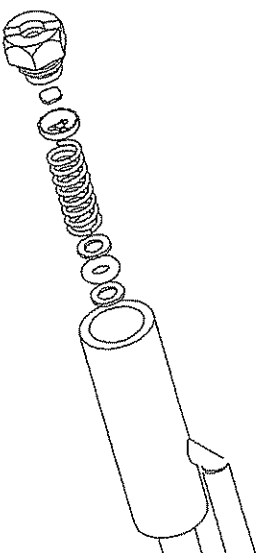


To replace pump parts, unscrew check valve on end of pump and remove spring; O-ring and two washers. Replace parts in sequence shown above.

PART #180382

2001-10-03 rev. 5

■ 1602011C PUMP PARTS KIT (MODEL 982)

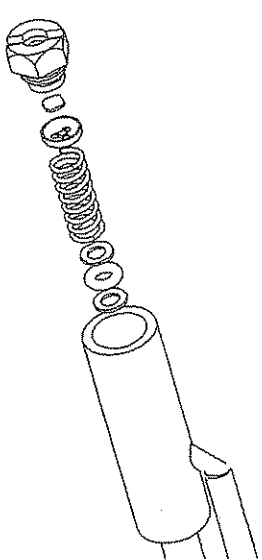


To replace pump parts, unscrew check valve on end of pump and remove spring; O-ring and two washers. Replace parts in sequence shown above.

PART #180382

2001-10-03 rev. 5

■ 1602011C PUMP PARTS KIT (MODEL 982)



To replace pump parts, unscrew check valve on end of pump and remove spring; O-ring and two washers. Replace parts in sequence shown above.

PART #180382

2001-10-03 rev. 5